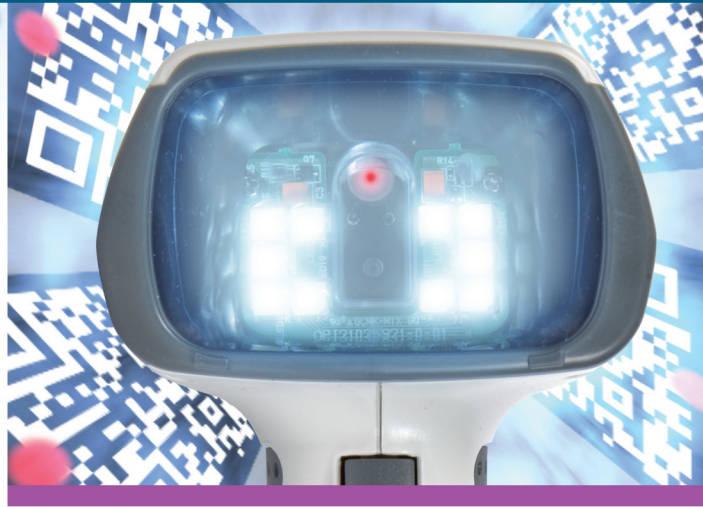


OPI 2101

Imager



A lightweight 1.3 megapixel imager that provides the versatility to read all standard 1D or 2D codes using white LEDs for lighting and a red laser spot for aiming.

Product Features

Full spectrum illuminated imager

The high performance white LEDs create a wider range of options for effortless scanning. The illumination source of this scanner allows scanning with the full spectrum of light and adds scanning of red-colored labels to the possibilities. The laser aiming spot helps the user to target the field of white light.

Plug and Scan

The plug and play ability of the OPI 2101 allows the user to quickly connect and operate the scanner and make the effortless scanning feature of immediate use.

Ergonomic & Rugged

The OPI 2101 scan head rests on a sleek and balanced pistol grip to optimize the comfort for the operator. The product withstands multiple drops up to 2 meters (6.5 feet) onto concrete and is designed to scan also in freezing areas. Made of high-quality materials this design is perfect to endure several rigors of environmental conditions.

Cabled

Wireless

Stationary

OEM

OPTICON
always scanning for new ID's

Specifications

OPI 2101 Imager

Electrical specifications

Power Supply: DC 4.5 V to 6.6 V

Current consumption: 340 mA (typical use)

Optical specifications

Light Source: 10 white LEDs full spectrum - peak 468nm/568nm (8 white LEDs for USB interface), aiming 650 nm red laser diode

Scan method: CMOS area sensor, SXGA (1.3 million pixels), gray scale

Scan rate: up to 30 fps

Reading pitch angle: -60 to 0°, 0 to +60°

Reading skew angle: -65 to 0°, 0 to +65°

Reading tilt angle: 360°

Focal plane: LD: 95 mm / 3.74 in from window, HD: 53 mm / 2.09 in from window

Curvature: R>15 mm (EAN8), R>20 mm (EAN13)

Reading width: depending on reading distance and barcode label resolution

Min. resolution at PCS 0.9: LD: 0.1 mm / 4 mil, *0.169 mm / 7 mil*, at Code39 and *Data Matrix*

HD: 0.127 mm / 5 mil, *0.169 mm / 7 mil*, at Code39 / PDF417 and *Data Matrix*

Min. PCS value: 0.45

Depth of field: at *PDF417* and Code 39

LD: *30 - 170 mm / 1.18 - 6.69 in (res. 0.339 mm / 13 mil)*,

LD: *60 - 100 mm / 2.36 - 3.94 in (res. 0.127 mm / 5 mil)*,

LD: 25 - 195 mm / 0.98 - 7.68 in (res. 0.5 mm / 20 mil),

LD: 35 - 130 mm / 1.38 - 5.12 in (res. 0.25 mm / 10 mil),

LD: 60 - 100 mm / 2.36 - 3.94 in (res. 0.1 mm / 4 mil),

HD: *15 - 100 mm / 0.59 - 3.94 in (res. 0.339 mm / 13 mil)*,

HD: *12 - 87 mm / 0.47 - 3.43 in (res. 0.254 mm / 10 mil)*,

HD: *25 - 60 mm / 0.98 - 2.36 in (res. 0.127 mm / 5 mil)*,

HD: 5 - 83 mm / 0.20 - 3.27 in (res. 0.254 mm / 10 mil),

HD: 30 - 53 mm / 1.18 - 2.09 in (res. 0.1 mm / 4 mil)

Field of view: horizontal: 47°, vertical: 37.5°

Communication specifications

Available interfaces: RS232C, Keyboard Wedge, USB(HID/VCP)

Identification

Supported 1D Symbologies: JAN/UPC/EAN (WPC) incl. add on, Chinese Post, Codabar/NW7, Code 39, Code 93, Code 128, IATA, Industrial 2of5, Interleaved 2of5, Korean Postal Authority code, Matrix 2of5, MSI/Plessey-UK/Plessey, RSS, S-Code, Telepen, Tri-Optic, Composite codes

Supported 2D Symbologies: Aztec Code, Aztec Runes, CodablockF, Data Matrix (ECC200/EC0-140), Maxi Code (mode 2-5), MicroPDF417, Micro QR Code, PDF417, QR code

Functionality

Trigger mode: manual, multiple read, auto-trigger, stand detection

Upgradeability: via cable

Image format: Windows Bitmap, JPEG, TIFF

Gradulation: 256, 16, 2

Image output mode: 4 resolutions (full, 1/2, 1/3, 1/4), 2 ranges (horizontal, vertical)

Environmental specifications

Temperature in operation: -20 to 50°C / -4 to 122°F

Temperature in storage: -25 to 70°C / -13 to 158°F

Humidity in operation: 5 - 95 % (non-condensing)

Humidity in storage: 5 - 95 % (non-condensing)

Antistatic electricity: 15 kV (non-destructive)

Ambient white light immunity: 10,000 lx max

Ambient direct sun light immunity: 100,000 lx max

Shock drop test: 1.5 - 2.0 m / 5 - 6.5 ft drop onto concrete surface

Shock vibration test: 10 - 100 Hz with 2 G for 1 hour, cycle for x/y/z

Protection (dust and moisture, IEC529): IP 42

Physical specifications

Dimensions: 175 x 72 x 95 mm / 6.89 x 2.83 x 3.74 in

Weight body: Ca. 185 g / 6.5 oz (excl cable)

Regulatory

Laser compliance: JIS-C-6802 Class 2M, IEC 60825-1 Class 2M, FDA CDRH

Class 2M

Product compliance: CE, FCC, VCCI, RoHS

Enclosed items

AC adapter DC 6.0 V ± 5% (for RS-232C and Keyboard wedge interface models)

Depth of field

Unit: mm (in)

Dimension

Unit: mm (in)

Conditions

To be determined: Drop, Availability & Ordering quantity